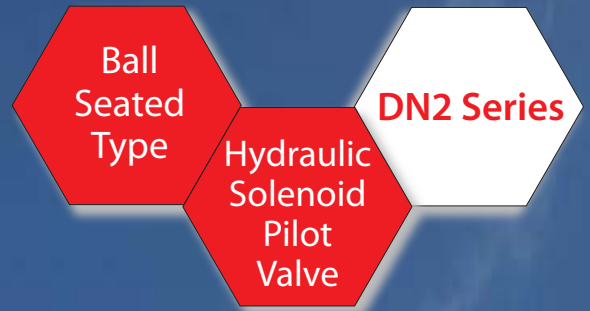


Severe & Hazardous Area Experts



- Specifically designed for Severe Offshore Environments
- Certified for Zone 1, Division 1 Hazardous Areas
- ATEX 94/9/EC
- M.T.B.F., Lambda and SIL Data (Available upon request)

• Easy Installation, Repair and Replacement

• Ambient Temperature Range -20°C to +60°C
(Low temperature version -50°C)

• Low Power Consumption (< 1 Watt & 3.5 Watts)

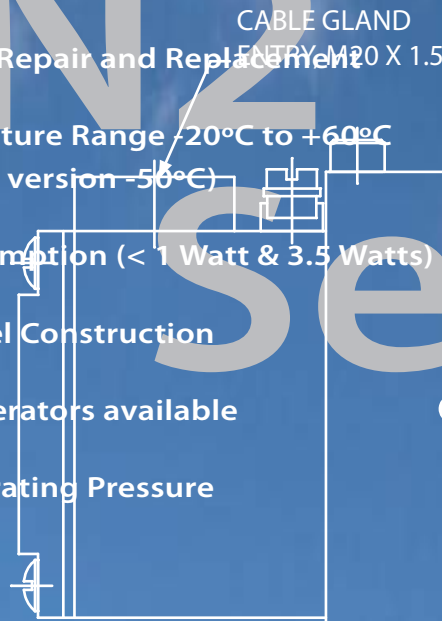
• 316 Stainless Steel Construction

• Wide range of operators available

• 690 bar Max Operating Pressure

• Leak tight

• 1 litre/min



Severe & Hazardous Area Experts

Ball
Seated
Type

Hydraulic
Solenoid
Pilot
Valve

DN2 Series

General Description

The DN2 is a ball seated hydraulic control valve. The stainless steel seat and ceramic ball design ensures a leak tight shut off.

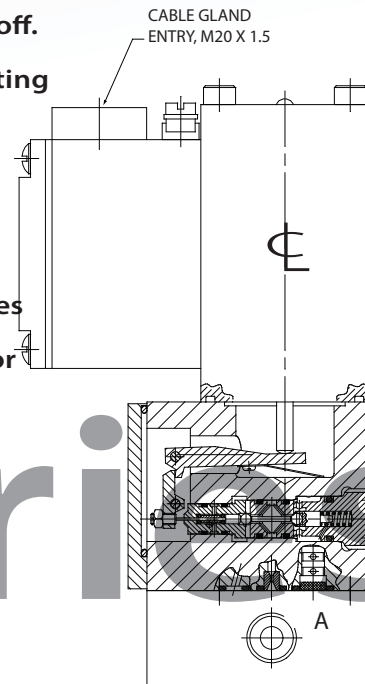
The DN2 valve design incorporates a balanced internal piloting system and a lever mechanism to enable low powered operators to switch the valve at high pressures.

The DN2 valve itself features an 'O' ring interface that enables it to be fitted with a 1/4" NPT ported subplate as standard, or

manifold mounted for use in wellhead control applications.

This interface also allows direct mounting of the DN2 valve to larger pilot-operated DN5 and DN10 valves, whereby

increasing the flow capacity up to 40L/min. (Please consult factory for further information).



By removing just 4 bolts the valve can be dismantled without disturbing pipework and possibly contaminating the hydraulic system. Blanking or flushing plates can also be supplied.

Materials of construction

- Valve bodies and subplates 316L Stainless Steel
- Wetted parts, various grades of stainless steel/ceramic
- Fasteners, A4, grade 80 stainless steel
- Springs, stainless steel

Filtration

- Recommended 10 micron absolute

Ingress protection

- IP66/NEMA 4X

Ambient temperature range

- Standard: -20°C to +60°C
- Low Temp: -50°C to +60°C

Operating pressure range

- 0 to 690 bar depending on operator type

Fluid Media

- Suitable for use with Mineral Oils, Water Glycols and Synthetic fluids



ATEX



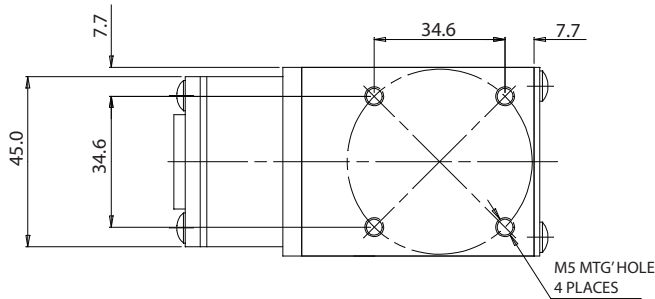
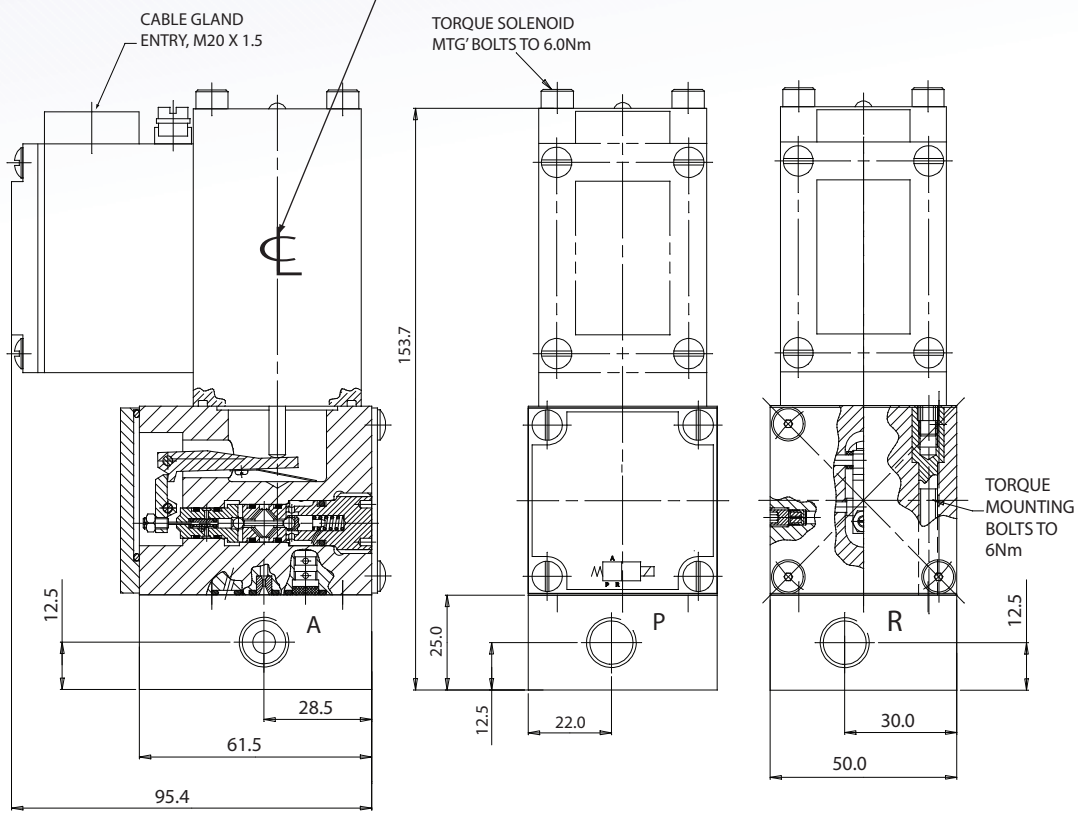
Severe & Hazardous Area Experts

Ball Seated Type

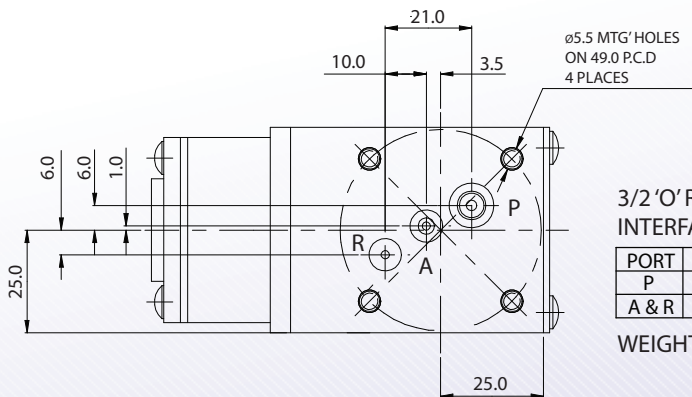
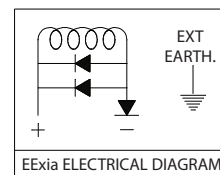
Hydraulic Solenoid Pilot Valve

DN2 Series

Note:
Coil can be rotated through 90° increments about centreline



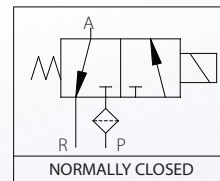
3/2 SUBPLATE MOUNTED
ALL PORTS 1/4" NPT
WEIGHT 3.1 KGS



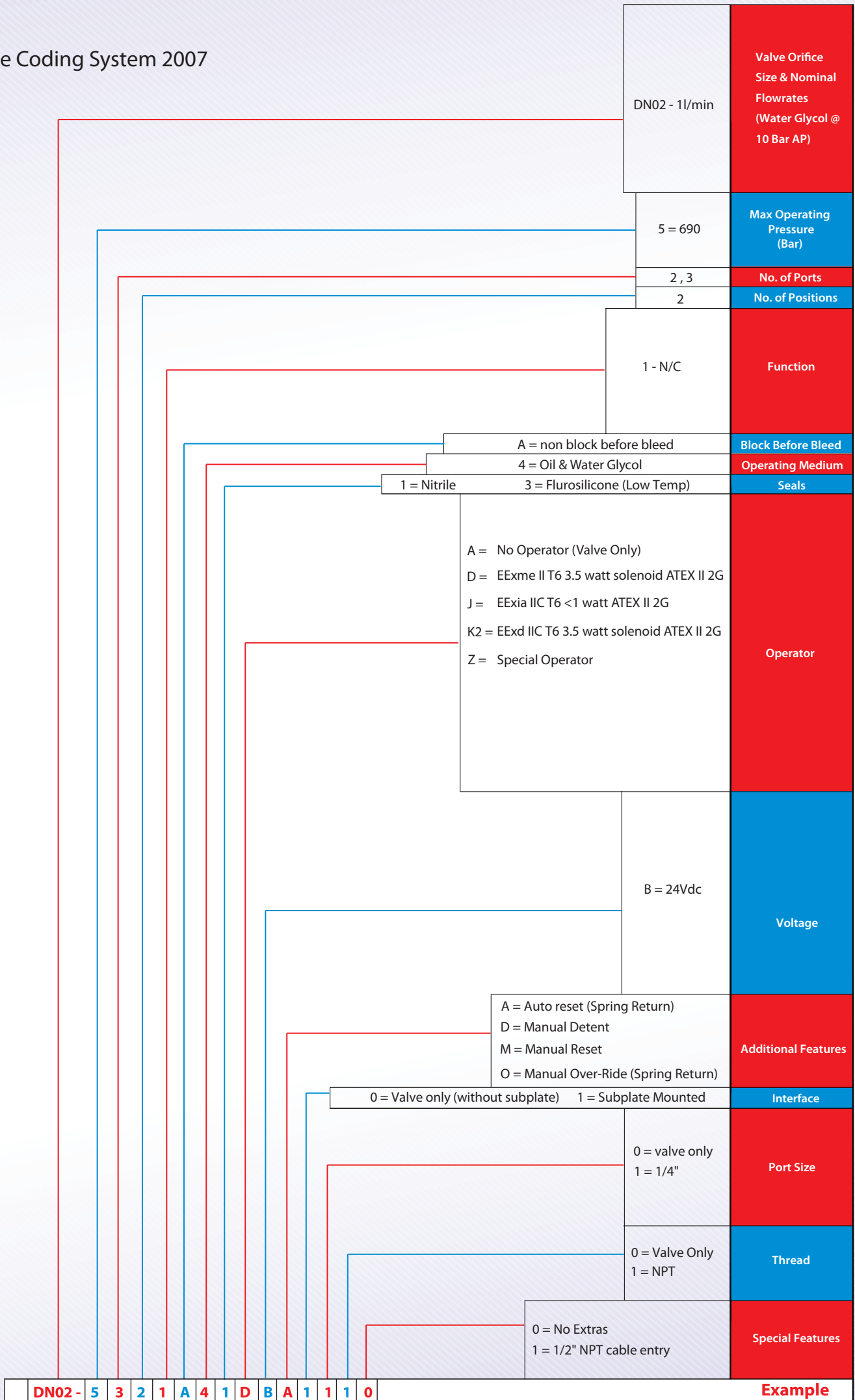
3/2 O' RING INTERFACE

PORT	DIA.	O' RING
P	2.0	8.0 x 1.5
A & R	2.0	5.0 x 1.5

WEIGHT 2.6 KGS



Valve Coding System 2007



DN02 - 5 3 2 1 A 4 1 D B A 1 1 1 0 **Example**